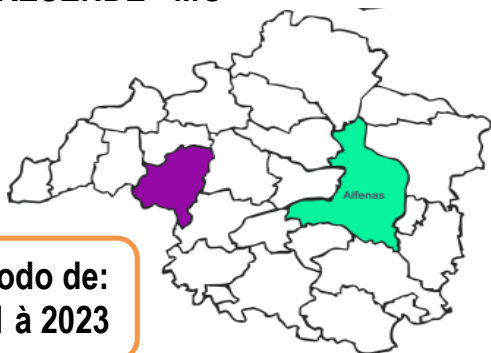


**NOVA RESENDE - MG**



**Período de:**  
**2021 à 2023**

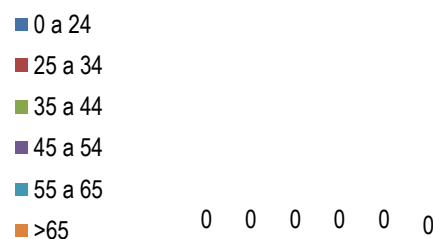
**Habitantes**  
**16.937**  
% atendidos  
**0,2%** aa  
% tratados  
**0,0%** aa



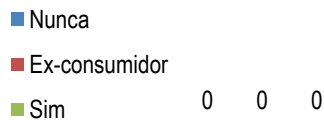
**Raça**



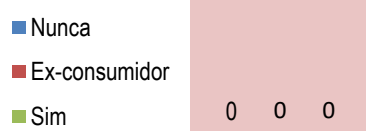
**Faixa etária**



**Tabagismo**



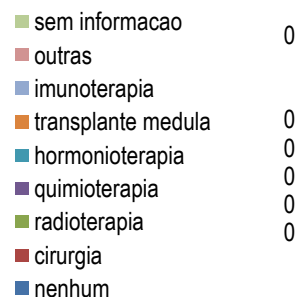
**Etilismo**



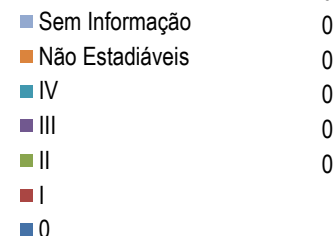
**Tratamentos**



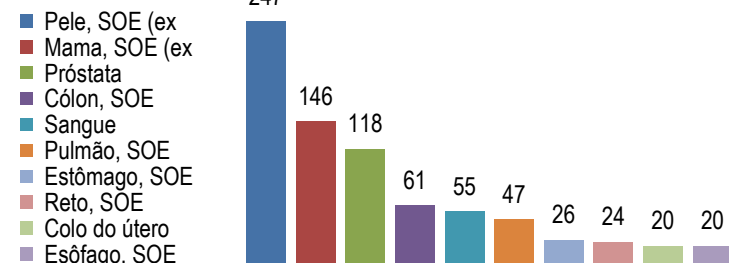
**Primeiro tratamento recebido**



**Estadiamento**



**10 Mais tratados**



**Óbitos**

